

INTERNATIONAL INDIAN SCHOOL, RIYADH  
SA II WORKSHEET 2015-2016

UNIT-9 DECIMALS

CLASS-IV

MATHEMATICS

---

I) FILL IN THE BLANKS

- 1) \_\_\_\_\_ are the another way of writing fraction with denominator 10, 100, 1000 etc.
- 2) In 23.5 , whole number part is \_\_\_\_\_ and decimal part is \_\_\_\_\_.
- 3) The decimal form of \_\_\_\_\_ is \_\_\_\_\_.
- 4) The fractional form of 9.51 is \_\_\_\_\_.
- 5) 35.604 can be read as \_\_\_\_\_.
- 6) The decimal form of sixty seven and four hundredths is \_\_\_\_\_.
- 7) 1 tenth = \_\_\_\_\_ hundredths.
- 8) Decimal form of 5 tenths is \_\_\_\_\_.
- 9) Fractional form of 27 hundredths is \_\_\_\_\_.
- 10) The fractional form of 9.008 is \_\_\_\_\_.
- 11) The digit to the right of the decimal point conveys that It is less than \_\_\_\_\_.

II) WRITE THE DECIMALS IN WORDS.

- a) 9.2 –

b) 36.08 --

c) 8.95 --

d) 13.3 --

e) 0.09 --

III) EXPRESS AS A DECIMAL

a)  $\frac{38}{10}$

b)  $\frac{92}{100}$

c)  $6\frac{3}{10}$

d)  $5\frac{9}{10}$

e)  $\frac{4}{100}$

f)  $\frac{2016}{100}$

g)  $\frac{297}{10}$

h)  $17\frac{2}{100}$

IV) EXPRESS AS A FRACTION

a) 0.9

b) 0.08

c) 15.18

d) 7.3

e) 36.4

f) 0.46

g) 5.08

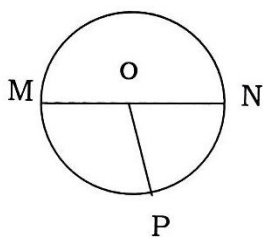
h) 95.06

i) 8.08

## CHAPTER : 7 SHAPES , SPACE AND PATTERNS

Fill in the blanks:-

1. \_\_\_\_\_ shapes are called closed curves.
2. Closed shapes formed by straight lines are called \_\_\_\_\_.
3. A \_\_\_\_\_ is named according to the number of sides it has.
4. A polygon with three line segments is called a \_\_\_\_\_.
5. A polygon with 4 line segments is called a \_\_\_\_\_.
6. A \_\_\_\_\_ is a quadrilateral with opposite sides equal.
7. A \_\_\_\_\_ is a quadrilateral with all sides equal.
8. A \_\_\_\_\_ is a simple closed curve .
9. The length of the circle is called it's \_\_\_\_\_.
10. The point where the diameter and the radius meet is called \_\_\_\_\_ of the circle.
11. In the given figure



- a) Centre of the circle is \_\_\_\_\_.
- b) Radius of the circle is \_\_\_\_\_.
- c) Diameter of the circle is \_\_\_\_\_.

12. The \_\_\_\_\_ is twice the length of the radius.
13. The \_\_\_\_\_ is half the length of the diameter.
14. The radius of a circle is 3cm .It's diameter is \_\_\_\_\_.
15. The diameter of a circle is 16m .It's radius is \_\_\_\_\_.

Do the following

1. Name the parts of the circle.

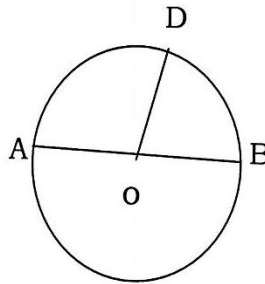
a) Centre \_\_\_\_\_

b) Diameter \_\_\_\_\_

c) Radius \_\_\_\_\_

d) OQ \_\_\_\_\_

e) OP \_\_\_\_\_



2. Give the radius of the circle with the following diameter

a) 32cm

b) 10m

c) 74m

d) 90cm

e) 16cm

f) 52m

g) 28cm

h) 50m

3. Give the diameter of circle with the following radius .

a) 30cm

b) 25m

c) 85cm

d) 9m

e) 50cm

f) 18m

g) 72m

h) 44cm

4. Say whether the following are true or false.

a) All the radii of a particular circle are of equal length.

b) The diameter is half the radius..

c) The diameter goes through the centre of the circle.

## CHAPTER : 10 MEASUREMENT

Fill in the blanks:

1. The standard unit of measuring length is \_\_\_\_\_.
2.  $1\text{m} =$  \_\_\_\_\_  $\text{cm}$ .
3.  $1\text{km} =$  \_\_\_\_\_  $\text{m}$ .
4.  $9\text{km} =$  \_\_\_\_\_  $\text{m}$ .
5.  $25\text{m} =$  \_\_\_\_\_  $\text{cm}$ .
6.  $\frac{1}{2}\text{m} =$  \_\_\_\_\_  $\text{cm}$ .
7.  $\frac{1}{4}\text{km} =$  \_\_\_\_\_  $\text{m}$ .
8.  $\frac{3}{4}\text{km} =$  \_\_\_\_\_  $\text{m}$ .
9.  $\frac{1}{2}\text{km} =$  \_\_\_\_\_  $\text{m}$ .
10.  $\frac{1}{4}\text{m} =$  \_\_\_\_\_  $\text{cm}$ .
11.  $\frac{3}{4}\text{m} =$  \_\_\_\_\_  $\text{cm}$ .
12. The standard unit of measuring weight (mass) is \_\_\_\_\_.
13.  $1\text{kg} =$  \_\_\_\_\_  $\text{g}$ .
14.  $\frac{1}{2}\text{kg} =$  \_\_\_\_\_  $\text{g}$ .
15.  $\frac{1}{4}\text{kg} =$  \_\_\_\_\_  $\text{g}$ .
16.  $\frac{3}{4}\text{kg} =$  \_\_\_\_\_  $\text{g}$ .
17. The standard unit of measuring capacity is \_\_\_\_\_.
18.  $1\text{ l} =$  \_\_\_\_\_  $\text{ml}$ .
19.  $500\text{ ml} =$  \_\_\_\_\_  $\text{l}$ .
20.  $250\text{ ml} =$  \_\_\_\_\_  $\text{l}$ .
21.  $2\text{ l} =$  \_\_\_\_\_  $\text{ml}$ .
22.  $3\frac{1}{2}\text{ l} =$  \_\_\_\_\_  $\text{ml}$ .
23.  $5000\text{ ml} =$  \_\_\_\_\_  $\text{l}$ .
24.  $750\text{ ml} =$  \_\_\_\_\_  $\text{l}$ .

Do the following

1. Draw the line segments of the given measurements :

- a) 8 cm      b) 4 cm      c) 6 cm      d) 10 cm  
e) 5 cm      f) 14 cm

2. Express in m.

- a) 100 cm      b) 250 cm      c) 720 cm      d) 400 cm  
e) 613 cm      f) 310 cm

3. Express in cm

- a) 5m 50cm      b) 6m 18cm      c) 9m      d) 4m 25cm  
e) 7m 3cm      f) 10m 50cm

4. Express in km

- |          |          |          |
|----------|----------|----------|
| a) 4652m | b) 3072m | c) 1961m |
| d) 8406m | e) 5500m | f).9000m |

5. Express in m

- |         |         |        |
|---------|---------|--------|
| a) 2km  | b) 6 km | c) 7km |
| d) 3 km | e) 8 km | f) 5km |

6. Express in liters

- |            |            |            |
|------------|------------|------------|
| a) 2000 ml | b) 2450 ml | c) 1040 ml |
| d) 2500 ml | e) 5370 ml | f) 7000 ml |

7. Express in milliliters

- |         |         |        |
|---------|---------|--------|
| a) 11 l | b) 3 l  | c) 5 l |
| d) 9 l  | e) 12 l | f) 7 l |

8. Express in kg

- |          |          |           |
|----------|----------|-----------|
| a) 3700g | b) 5700g | c)6250g   |
| d) 2940g | e) 1260g | f) 9300 g |

9. Express in g

- |                       |                       |                       |
|-----------------------|-----------------------|-----------------------|
| a) 6kg                | b) $1 \frac{3}{4}$ kg | c) $5 \frac{1}{4}$ kg |
| d) $3 \frac{1}{2}$ kg | e) 8kg                | f) $4 \frac{1}{2}$ kg |

10. We use \_\_\_\_\_, \_\_\_\_\_ and \_\_\_\_\_ to measure lengths.

11. We use \_\_\_\_\_ to weigh heavier objects and \_\_\_\_\_ to weigh lighter objects.

12. \_\_\_\_\_ 200 ml. make 1 l.

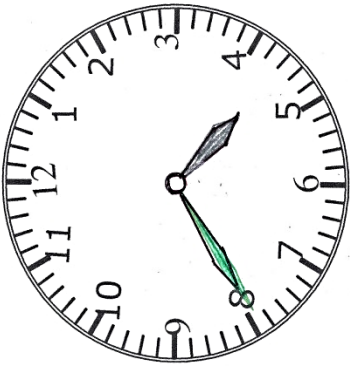
13. \_\_\_\_\_ 500 ml. make 1 l.

14. \_\_\_\_\_ 250 ml. make 1 l.

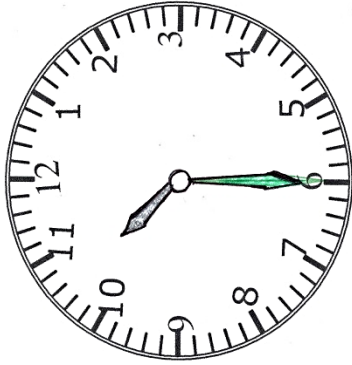
15. \_\_\_\_\_ 100 ml. make 1 l.



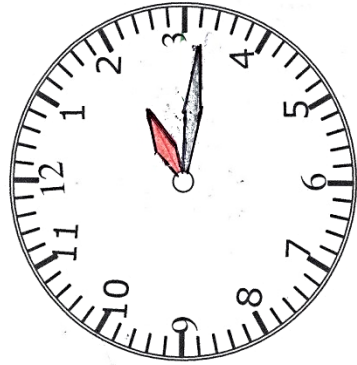
Write the time in 2 ways.



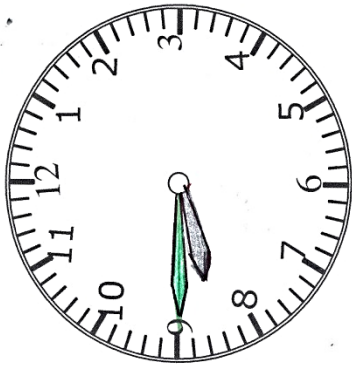
\_\_\_\_\_



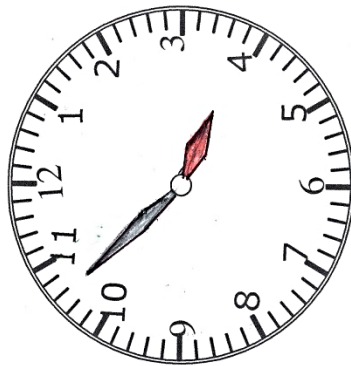
\_\_\_\_\_



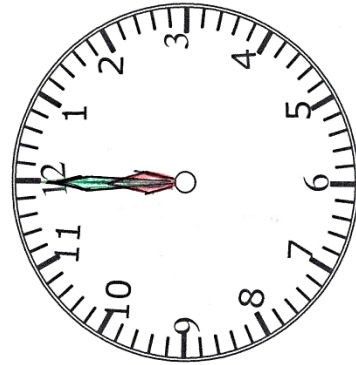
\_\_\_\_\_



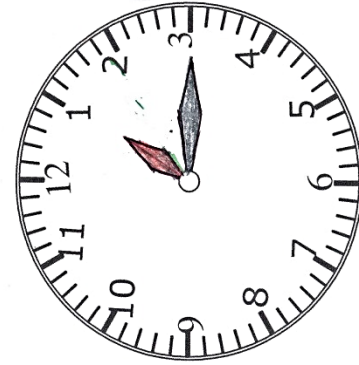
\_\_\_\_\_



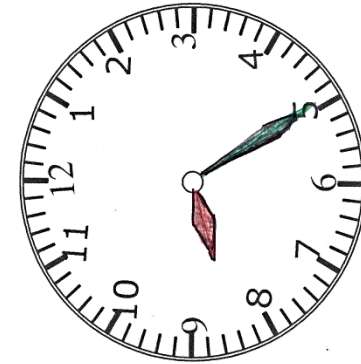
\_\_\_\_\_



\_\_\_\_\_



\_\_\_\_\_



\_\_\_\_\_

Practice with different time.